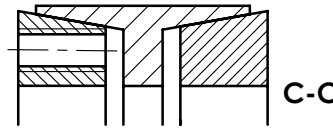
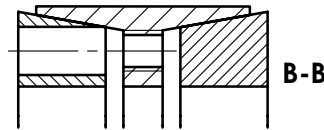
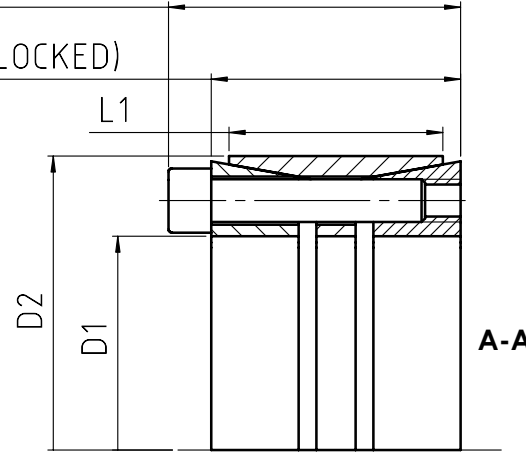
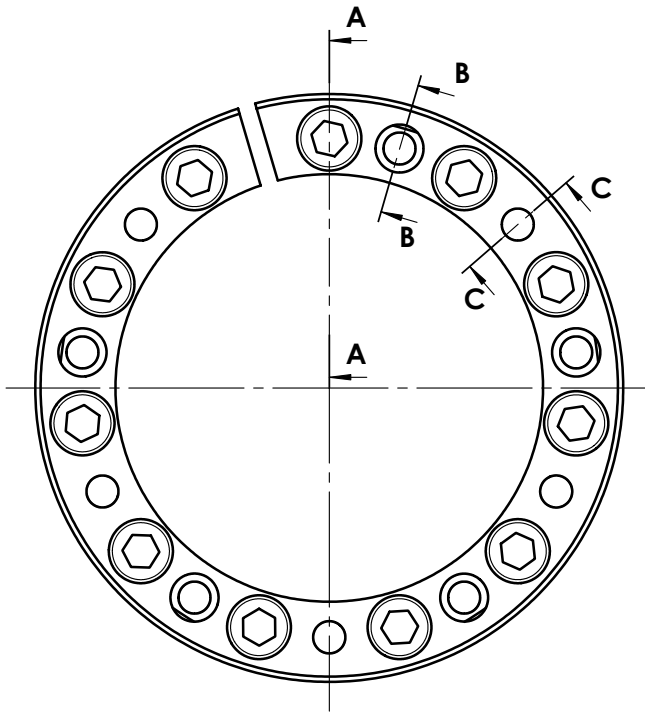
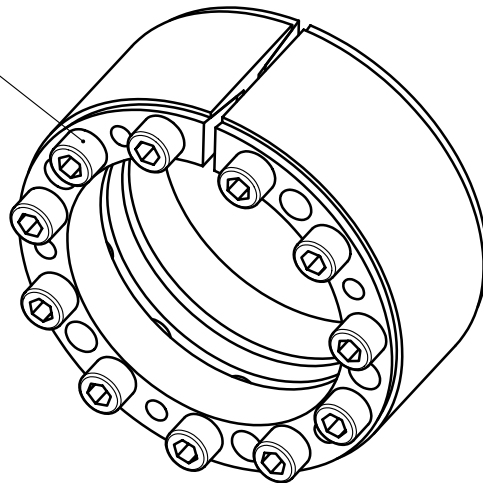


L3 (UNLOCKED)

L2 (UNLOCKED)



N SOCK HEAD BOLTS
SIZE X



	D1	D2	L1	L2	L3	N	X	MASS
	E8	g6	+/-0.2	REF	REF			(kg)
70x110	70	110	50	60	70	8	M10X55	2.3
80x120	80	120	50	60	70	10	M10X55	2.6
90x130	90	130	50	60	70	11	M10X55	2.8
100x145	100	145	60	70	82	10	M12X60	4.1
110x155	110	155	60	70	82	10	M12X60	4.4
120x165	120	165	60	70	82	11	M12X60	4.8
130x180	130	180	65	79	91	14	M12X65	6.5
140x190	140	190	65	79	91	15	M12X65	6.9
150x200	150	200	65	79	91	15	M12X65	7.4
160x210	160	210	65	79	91	16	M12X65	7.8
170x225	170	225	78	92	106	15	M14X75	10.8
180x235	180	235	78	92	106	15	M14X75	11.4
190x250	190	250	88	102	116	16	M14X80	14.6
200x260	200	260	88	102	116	18	M14X80	15.1
220x285	220	285	96	108	124	15	M16X90	19.1
240x305	240	305	96	108	124	20	M16X90	20.4
260x325	260	325	96	108	124	20	M16X90	22
280x355	280	355	96	110	130	15	M20X100	28.9
300x375	300	375	96	110	130	16	M20X100	30.7
320x405	320	405	124	136	156	20	M20X110	46
340x425	340	425	124	136	156	20	M20X110	48.5
360x455	360	455	140	155	177	20	M22X130	67
380x475	380	475	140	155	177	20	M22X130	70.5
400x495	400	495	140	155	177	22	M22X130	73
420x515	420	515	140	155	177	24	M22X130	76.2
440x535	440	535	140	155	177	24	M22X130	79.6
460x555	460	555	140	155	177	24	M22X130	83
480x575	480	575	140	155	177	25	M22X130	86.3
500x595	500	595	140	155	177	25	M22X130	89.5
520x615	520	615	140	155	177	28	M22X130	92.5
540x635	540	635	140	155	177	28	M22X130	96
560x655	560	655	140	155	177	30	M22X130	99.1
580x675	580	675	140	155	177	30	M22X130	102.5
600x695	600	695	140	155	177	30	M22X130	105.8