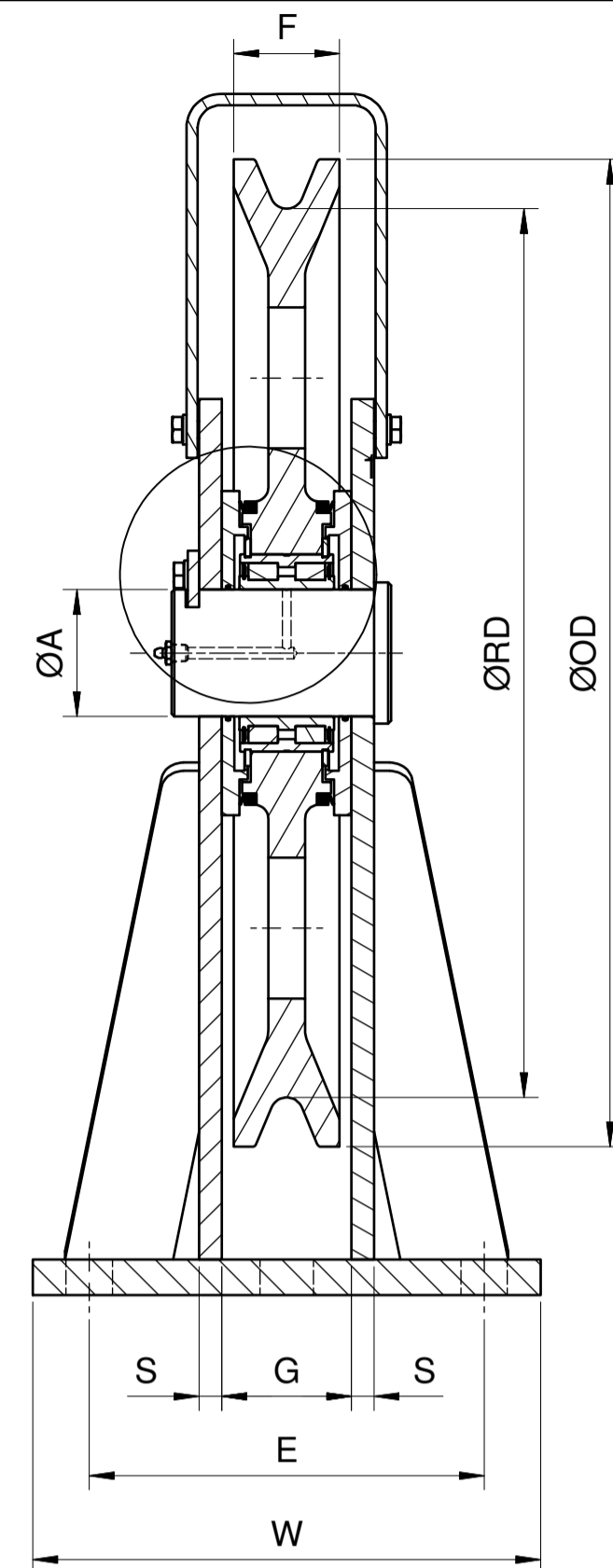
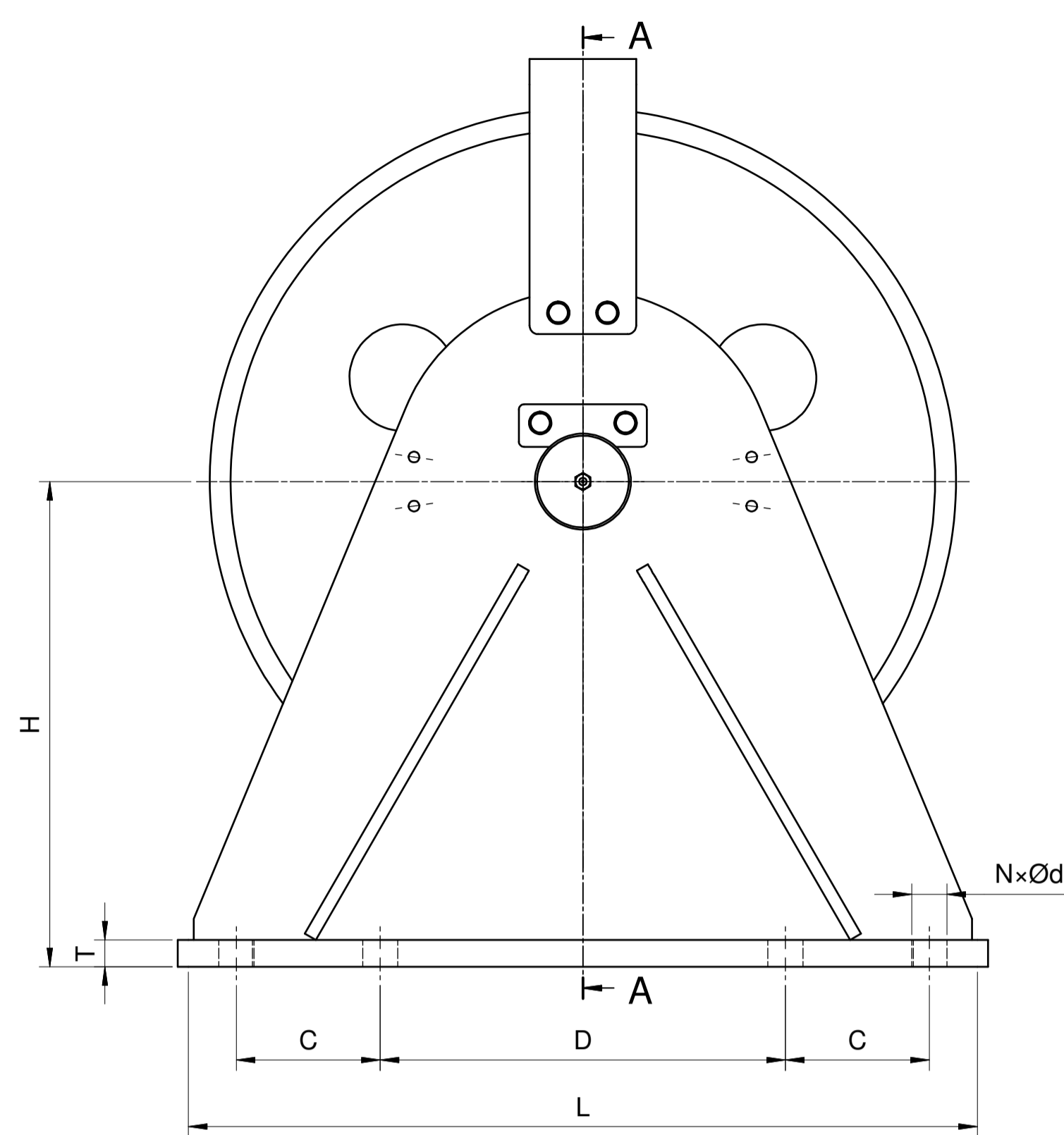
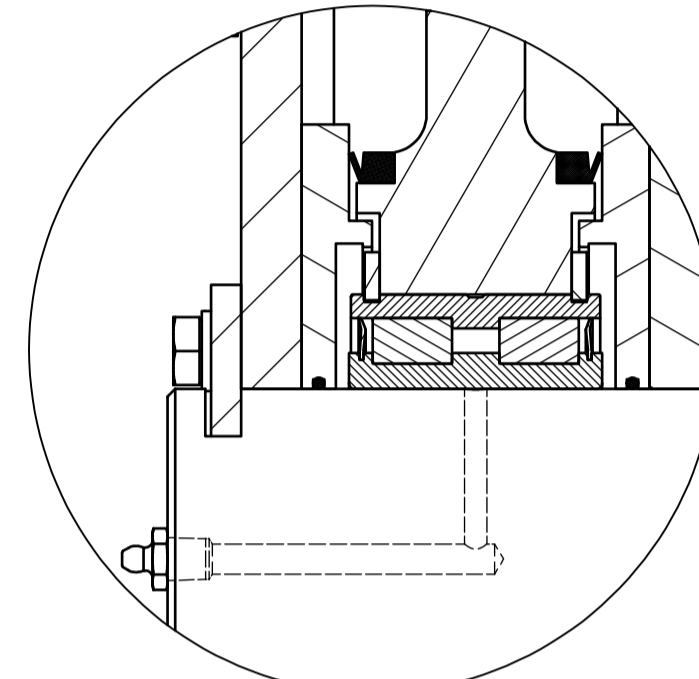


# TEFCO ENGINEERING STANDARD ROPE SHEAVE



SECTION A-A



DETAIL 1  
SCALE (1:2)

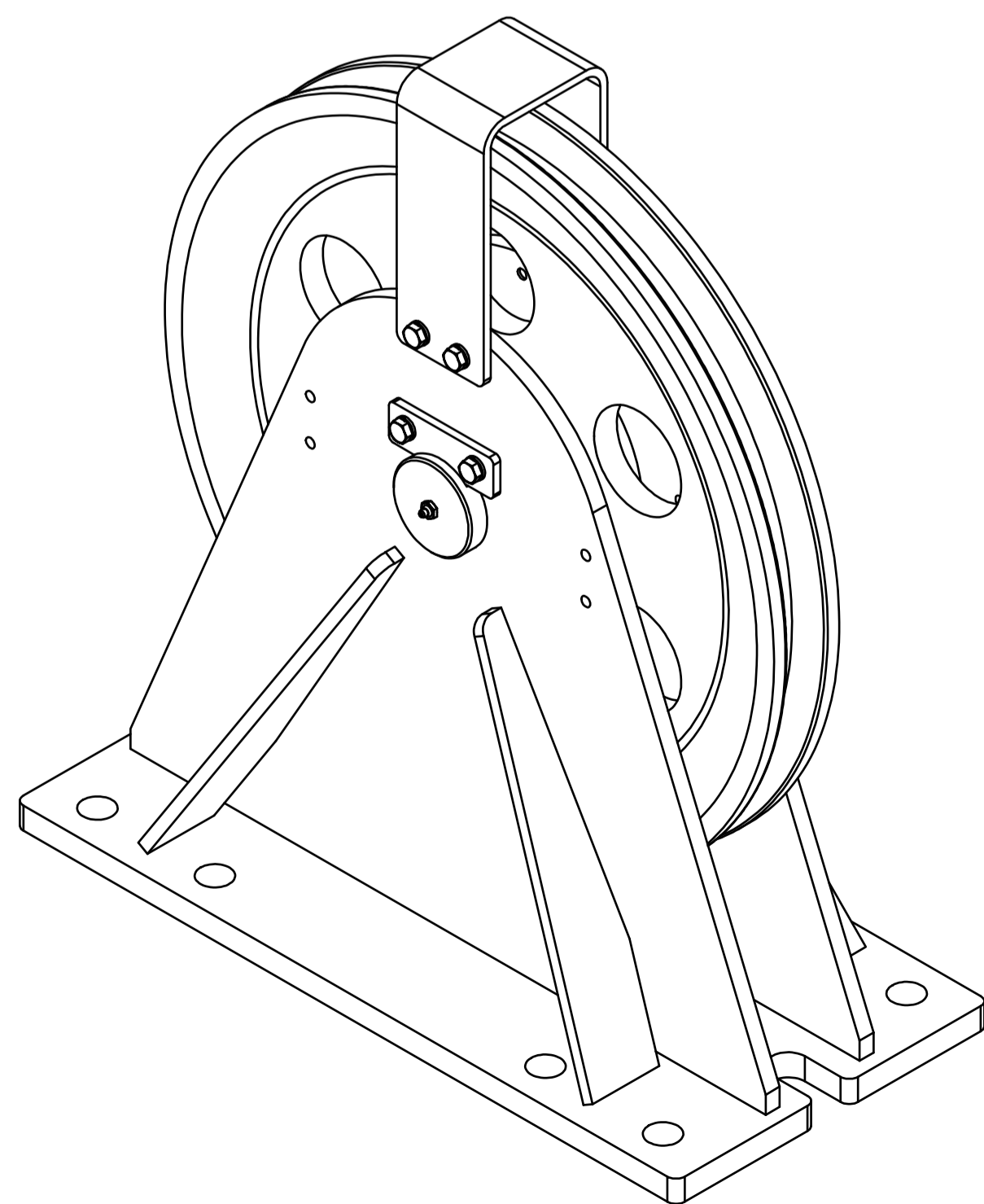
## CLASS OF MECHANISMS (AS1418)

ROPE Ø	TSH200	TSH250	TSH315	TSH350	TSH400	TSH500	TSH630	TSH710	TSH800	TSH864	TSH900	TSH1000	TSH1102
10	M5	M7	M8	-	-	-	-	-	-	-	-	-	-
12	M3	M5	M8	M8	M8	-	-	-	-	-	-	-	-
14	M2	M4	M7	M8	M8	-	-	-	-	-	-	-	-
16	M1	M3	M6	M7	M7	-	-	-	-	-	-	-	-
18	-	M2	M5	M6	M6	M8	-	-	-	-	-	-	-
20	-	M1	M4	M5	M5	M7	-	-	-	-	-	-	-
22	-	-	M3	M4	M4	M6	M8	-	-	-	-	-	-
24	-	-	M2	M3	M3	M5	M7	-	-	-	-	-	-
26	-	-	M2	M3	M3	M5	M7	M8	-	-	-	-	-
28	-	-	M1	M2	M2	M4	M6	M7	M8	-	-	-	-
30	-	-	-	M2	M2	M3	M5	M6	M7	-	-	-	-
32	-	-	-	-	-	M3	M5	M6	M7	M8	M8	M8	M8
34	-	-	-	-	-	M2	M4	M5	M6	M7	M7	M7	M7
36	-	-	-	-	-	M2	M4	M5	M6	M7	M7	M7	M7
38	-	-	-	-	-	-	-	M4	M5	M6	M6	M6	M6
40	-	-	-	-	-	-	-	M4	M5	M6	M6	M6	M6
42	-	-	-	-	-	-	-	M3	M5	M6	M6	M6	M6
44	-	-	-	-	-	-	-	M3	M4	M5	M5	M5	M5
46	-	-	-	-	-	-	-	M3	M4	M5	M5	M5	M5

## STANDARD SHEAVE DIMENSIONAL CHART

FRAME	RD	OD	ØA	C	D	E	F	G	H	L	N	Ød	S	T	W	ASSEMBLY MASS
	mm	mm	mm	mm	mm	mm	mm	mm	mm	mm		mm	mm	mm	mm	kg
F-200	200	255	35	-	150	130	45	54	175	230	4	23	10	16	190	23
F-250	250	320	40	-	180	150	55	64	215	280	4	23	10	16	220	38
F-315	315	395	45	-	230	160	62	76	270	330	4	27	12	16	240	53
F-350	350	440	70	-	360	220	64	73	315	450	4	33	12	16	300	87
F-400	400	470	70	-	360	220	64	73	315	450	4	33	12	16	300	88
F-500	500	610	85	-	440	240	78	86	390	570	4	33	16	20	320	164
F-630	630	730	90	-	380	280	78	86	455	760	8	33	16	25	360	246
F-710	710	800	120	135	460	320	94	96.5	495	840	8	33	16	25	400	330
F-800	800	920	130	155	490	340	108	111	540	930	8	33	16	25	420	440
F-864	864	984	140	170	570	380	60	128	532	1030	8	39	20	20	460	510
F-900	900	1020	140	170	570	380	108	111	590	1030	8	39	20	28	460	590
F-1000	1000	1120	130	280	560	290	100	137	716	1250	10 *	39	25	50	400	650
F-1102	1102	1240	140	280	560	290	100	137	716	1250	10 *	39	25	50	400	650

\* FOR LARGER ASSEMBLIES TWO EXTRA MOUNTING HOLES ARE REQUIRED ON MIDDLE OF MOUNTING PLATE ON 'E' CENTERS



## HOW TO ORDER

FOR MOST APPLICATIONS TEFCO ENGINEERING HAS WIRE ROPE SHEAVE ASSEMBLIES RANGING FROM 200 TO 1102 DIAMETER PER THE *STANDARD SHEAVE DIMENSIONAL CHART*. HOWEVER CUSTOM DESIGNED SHEAVE ASSEMBLIES CAN BE CREATED FOR NON STANDARD SIZES.

## COMPLETE THE FOLLOWING THREE STEP PROCESS

- CHECK THE APPLICATION AGAINST THE *CLASS OF MECHANISMS (AS1418)* TABLE.
- CREATE PART NUMBER

TSH200 / 10 / F

— SUPPLY WITH FRAME (REPLACE "F" WITH "-" FOR NO FRAME)

— ROPE DIAMETER

— SHEAVE ROOT DIAMETER

- CONTACT TEFCO ENGINEERING SALES (+612 4325 4433) FOR PRICE AND DELIVERY.

NOTE: FINITE ELEMENT ANALYSIS (FEA) IS AVAILABLE FOR HIGH STRENGTH APPLICATIONS.

## TECHNICAL DATA

### BEARINGS

NFF SERIES DOUBLE ROW CYLINDRICAL ROLLER BEARINGS ARE USED IN THE STANDARD RANGE FOR SPECIAL APPLICATIONS, ALTERNATIVE BEARINGS ARRANGEMENTS CAN BE OFFERED.

### BEARING LIFE

BEARING LIFE CAN BE CALCULATED BY TEFCO'S TECHNICAL DEPARTMENT.

### FINISH

- PRIME COAT: 50µm DFT INTERCURE 200 ZINC PHOSPHATE.  
- FINISH COAT: 100µm DFT INTERGARD 475HS (MIO) COLOUR AS2700 Y14 SAFETY YELLOW.

### ROPE GUARD

PREVENTS SLACK ROPES FROM LEAVING THE SHEAVE. ONE ROPE GUARD IS SUPPLIED AS STANDARD WITH EACH FRAME, AND CAN BE MOUNTED IN 3 POSITIONS USUALLY WHERE THE ROPE LEAVES THE SHEAVE.

### LUBRICATION

LUBRICATION IS AVAILABLE THROUGH A 1/4" BSP GREASE NIPPLE ON THE SHEAVE AXLE AS SHOWN.

### QUALITY

TEFCO ENGINEERING OPERATES A QUALITY SYSTEM TO ISO9001. CERTIFIED MATERIAL AND TESTING SUCH AS X-RAY, ULTRASONIC ETC IS AVAILABLE ON REQUEST.

### SHEAVE MATERIAL

AS1832/400-15 SG IRON IS STANDARD, FOR HIGH STRENGTH AND WEAR RESISTANCE THEN 2074/LC6 MAY BE SPECIFIED. HOWEVER, IF FLAME HARDENED ROPE GROOVES ARE REQUIRED THEN HIGH TENSILE STEEL L6 OR L6AI MAY BE NECESSARY DEPENDING ON THE ROCKWELL HARDNESS REQUIRED.

### FRAME MATERIAL

MANUFACTURED FROM GRADE 250 STEEL. FOR HIGH STRENGTH APPLICATIONS 350 GRADE STEEL MAY BE SPECIFIED.

### SHAFT MATERIAL

MANUFACTURED FROM AS1442/1045 ROUND BAR.

**TEFCO ENGINEERING**  
 3 GIBBENS ROAD, WEST GOSFORD, NSW, 2250  
 TEL: +612 4325 4433, FAX: +612 4325 4622  
COPYRIGHT: THIS DRAWING IS TEFCO ENGINEERING PROPERTY AND SHALL NOT BE PUBLISHED, REPRODUCED OR GIVEN TO ANY OTHER PARTY WITHOUT WRITTEN PERMISSION

DRAWN BY IKT	APPROVED BY DATE	DRAWING NUMBER 900-001	REV 2
-----------------	---------------------	---------------------------	----------

DATE: 22/10/2009